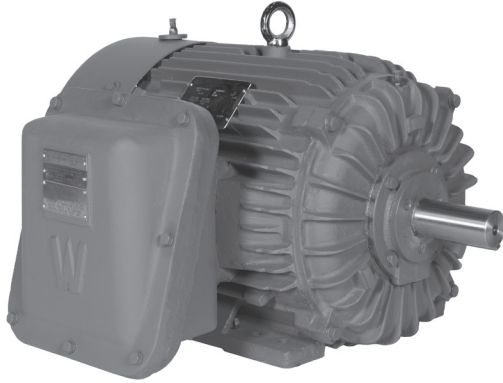


WORLDWIDE EXPLOSION PROOF MOTORS PREMIUM / HIGH EFFICIENCY ▪ INVERTER DUTY

TEXP Enclosure ▪ Rigid Base

Three-Phase ▪ 208-230/460 and 460 Volt



Product Overview

- 1-300 HP
- 3600, 1800 and 1200 RPM
- 208-230/460 volt (1-100 HP)
- 460 volt (125-300 HP)
- TEXP enclosure
- 1.15 service factor
- Class F insulation
- Rigid base
- Premium efficiency (1-200 HP)
- High efficiency (250-300 HP)
- Inverter duty, 5:1 CT / 10:1 VT (1-200 HP only)
- Three normally closed winding thermostats provided (one per phase)
- UL Listed Class 1, Div. 1, Groups C & D; Class 2, Div. 1, Groups F & G; T3C; inverter duty (1-200 HP), 40°C amb. temp. as standard
- 143T-215T: Class 1, Div. 1, Groups C & D; T3C; inverter duty (1-200 HP); 55°C amb. temp.
- 254T-449T: Class 1, Div. 1, Groups C & D; T2C; inverter duty (1-200 HP); 55°C amb. temp.

HP	RPM	Voltage	Frame	Model Number	List Price	FL Amps (A)	FL Eff. (%)	Approx. Wt. (lbs.)	Notes
1	1800	208-230/460	143T	IXPEWWE1-18-143T	-	1.6	85.5	70	
1.5	1800	208-230/460	145T	IXPEWWE1.5-18-145T	-	2.2	86.5	71	
	1200	208-230/460	182T	IXPEWWE1.5-12-182T	-	2.2	87.5	113	
2	3600	208-230/460	145T	IXPEWWE2-36-145T	-	2.6	85.5	75	
	1800	208-230/460	145T	IXPEWWE2-18-145T	-	2.8	86.5	73	
	1200	208-230/460	184T	IXPEWWE2-12-184T	-	2.9	88.5	123	
3	3600	208-230/460	182T	IXPEWWE3-36-182T	-	3.7	86.5	115	
	1800	208-230/460	182T	IXPEWWE3-18-182T	-	3.8	89.5	121	
	1200	208-230/460	213T	IXPEWWE3-12-213T	-	4.1	89.5	219	
5	3600	208-230/460	184T	IXPEWWE5-36-184T	-	5.8	88.5	128	
	1800	208-230/460	184T	IXPEWWE5-18-184T	-	6.2	89.5	131	
	1200	208-230/460	215T	IXPEWWE5-12-215T	-	6.6	89.5	279	
7.5	3600	208-230/460	213T	IXPEWWE7.5-36-213T	-	8.6	89.5	230	
	1800	208-230/460	213T	IXPEWWE7.5-18-213T	-	9.2	91.7	237	
	1200	208-230/460	254T	IXPEWWE7.5-12-254T	-	9.5	91.0	353	
10	3600	208-230/460	215T	IXPEWWE10-36-215T	-	11.5	90.2	252	
	1800	208-230/460	215T	IXPEWWE10-18-215T	-	12.4	91.7	243	
	1200	208-230/460	256T	IXPEWWE10-12-256T	-	12.5	91.0	368	
15	3600	208-230/460	254T	IXPEWWE15-36-254T	-	16.7	91.0	385	
	1800	208-230/460	254T	IXPEWWE15-18-254T	-	16.9	92.4	393	
	1200	208-230/460	284T	IXPEWWE15-12-284T	-	18.0	91.7	468	
20	3600	208-230/460	256T	IXPEWWE20-36-256T	-	22.7	91.0	429	
	1800	208-230/460	256T	IXPEWWE20-18-256T	-	23.0	93.0	435	
	1200	208-230/460	286T	IXPEWWE20-12-286T	-	24.4	91.7	480	
25	3600	208-230/460	284TS	IXPEWWE25-36-284TS	-	27.7	91.7	520	
	1800	208-230/460	284T	IXPEWWE25-18-284T	-	27.9	93.6	516	
	1200	208-230/460	324T	IXPEWWE25-12-324T	-	30.2	93.0	630	

WORLDWIDE EXPLOSION PROOF



WORLDWIDE EXPLOSION PROOF MOTORS PREMIUM / HIGH EFFICIENCY ▪ INVERTER DUTY

TEXP Enclosure ▪ Rigid Base

Three-Phase ▪ 208-230/460 and 460 Volt



HP	RPM	Voltage	Frame	Model Number	List Price	FL Amps (A)	FL Eff. (%)	Approx. Wt. (lbs.)	Notes
30	3600	208-230/460	286TS	IXPEWWE30-36-286TS	-	32.8	91.7	537	
	1800	208-230/460	286T	IXPEWWE30-18-286T	-	33.0	93.6	523	
	1200	208-230/460	326T	IXPEWWE30-12-326T	-	35.4	93.0	670	
40	3600	208-230/460	324TS	IXPEWWE40-36-324TS	-	44.9	92.4	650	
	1800	208-230/460	324T	IXPEWWE40-18-324T	-	45.5	94.1	670	
	1200	208-230/460	364T	IXPEWWE40-12-364T	-	47.1	94.1	910	
50	3600	208-230/460	326TS	IXPEWWE50-36-326TS	-	56.0	93.0	695	
	1800	208-230/460	326T	IXPEWWE50-18-326T	-	57.0	94.5	715	
	1200	208-230/460	365T	IXPEWWE50-12-365T	-	59.0	94.1	950	
60	3600	208-230/460	364TS	IXPEWWE60-36-364TS	-	67.5	93.6	870	
	1800	208-230/460	364T	IXPEWWE60-18-364T	-	68.5	95.0	920	
	1200	208-230/460	404T	IXPEWWE60-12-404T	-	69.5	94.5	1245	
75	3600	208-230/460	365TS	IXPEWWE75-36-365TS	-	82.5	93.6	925	
	1800	208-230/460	365T	IXPEWWE75-18-365T	-	83.5	95.4	985	
	1200	208-230/460	405T	IXPEWWE75-12-405T	-	84.5	94.5	1320	
100	3600	208-230/460	405TS	IXPEWWE100-36-405TS	-	112	94.1	1305	
	1800	208-230/460	405T	IXPEWWE100-18-405TBB	-	113	95.4	1350	
	1200	208-230/460	444/ST	IXPEWWE100-12-444/STBB	-	115	95.0	1555	
125	3600	460	444/5TS	IXPEWWE125-36-444/5TS	-	134	95.0	1625	
	1800	460	444/5T	IXPEWWE125-18-444/5TBB	-	134	95.4	1555	
	1200	460	444/5T	IXPEWWE125-12-444/5TBB	-	138	95.0	1740	
150	3600	460	444/5TS	IXPEWWE150-36-444/5TS	-	164	95.0	1720	
	1800	460	444/5T	IXPEWWE150-18-444/5TBB	-	163	95.8	1740	
	1200	460	447/9T	IXPEWWE150-12-447/9TBB	-	167	95.8	1950	
200	3600	460	444/5TS	IXPEWWE200-36-444/5TS	-	223	95.4	1820	
	1800	460	445/7/9T	IXPEWWE200-18-445/7/9TBB	-	223	96.2	1990	
	1200	460	447/9T	IXPEWWE200-12-447/9TBB	-	233	95.8	2585	
250	3600	460	447/9TS	XWWE250-36-447/9TS	-	274	95.4	2355	X
	1800	460	447/9T	XWWE250-18-447/9TBB-T	-	275	95.2	2560	X
300	1800	460	447/9T	XWWE300-18-447/9TBB	-	325	95.4	2728	X

WORLDWIDE
EXPLOSION PROOF

